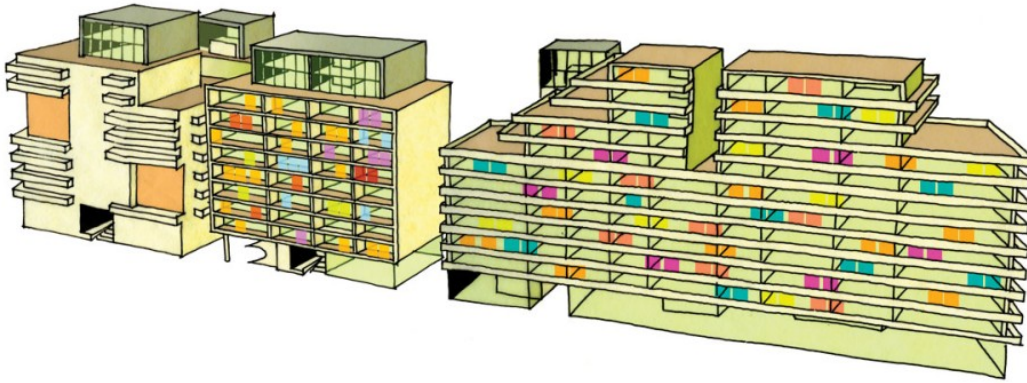


lipsky+rollet architecture et environnement

macro-lot "rives de seine" area
environmental design + boulogne-billancourt 2012



program

macro-lot b3 of 500 housing units including social housing, underground parking, offices, shops and activities, as well as exterior landscape installations.

governing authority

vinci immobilier résidentiel

mission

coordinator of architecture and urban planning

project manager

lipsky+rollet architects-urban planners

antoine neto-berenguer, project manager with : christophe girot - atelier girot gmbh (landscape design) philippe coignet - office of landscape morphology (landscape execution)

aménageur

saem val de seine aménagement

surface area

macro-lot b3 : 12 800 sqm, construction : 48 200 sqm (housing units : 37 400 sqm, offices : 9 000 sqm, shops : 1 000 sqm, activities : 800 sqm)

