

**"hautbois", logements de grande hauteur bois (competition)**  
housing + environmental design + paris 2017



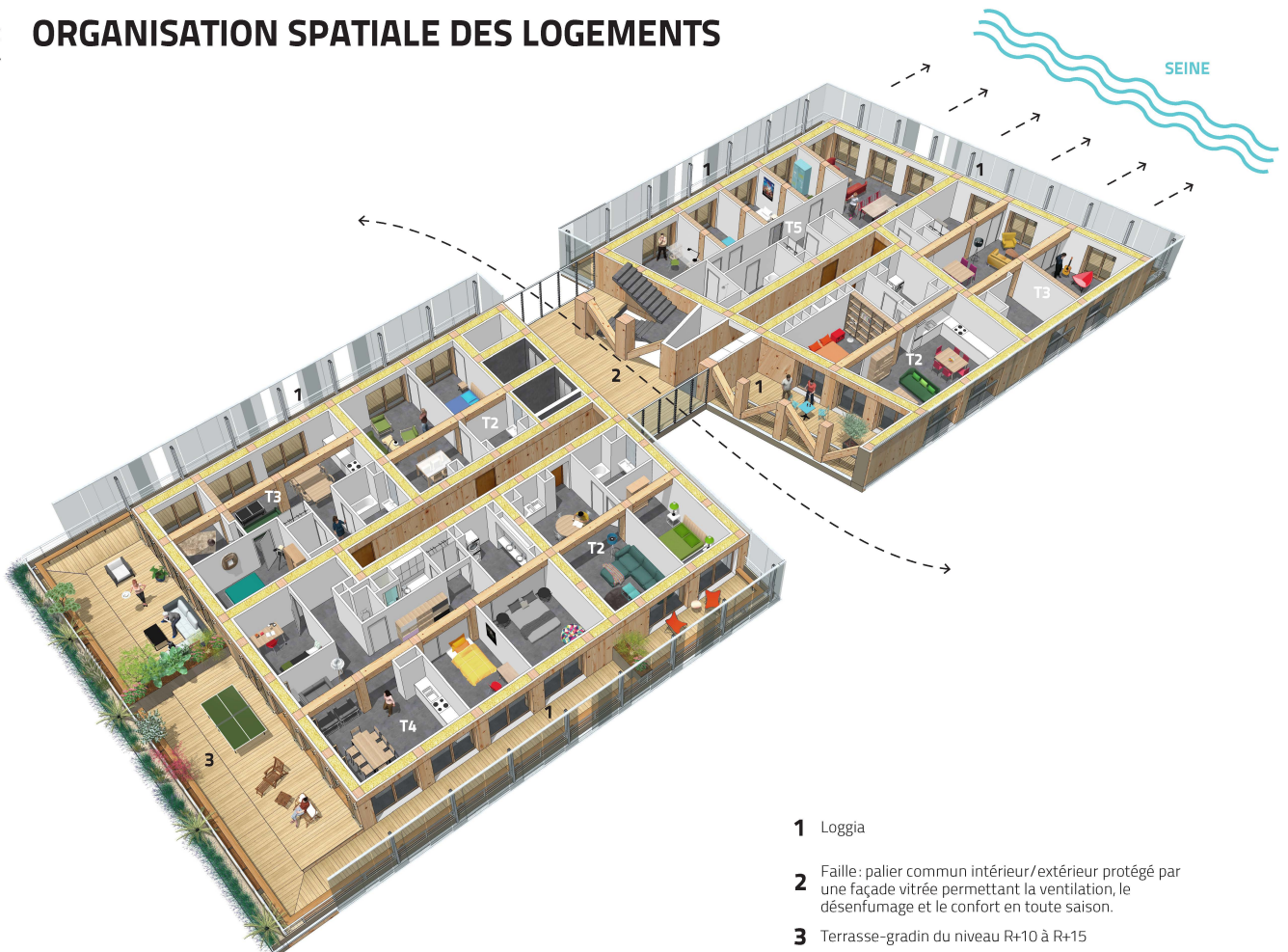
**the "hautbois" project is set on the banks of the river seine. it is part of the timber high rise projects conceived for paris's timber architecture competition. this innovative 16 floor building entails 112 flats (8 888 sqm), shops, services and parking space. the project gave rise to major innovations:**

- 1- in terms of space usage and service sharing (rooftop garden, concierge ...)**
- 2- conceptual and technological innovations pertaining to new uses in town : systemic urban agriculture innovation with vegetation being intrinsic to the building/ creation of transition spaces.**
- 3- timber innovation technics with the architectural concept of core-skin-shell : a glass front protects the wood (urban wood®); 100% wooden structure constructing system with load-bearing shear walls and no concrete core. reduced building time and guarantee of high-quality construction.**

**architectural review future awards (2019)**



## ORGANISATION SPATIALE DES LOGEMENTS



- 1** Loggia
- 2** Faïence: palier commun intérieur/extérieur protégé par une façade vitrée permettant la ventilation, le désenfumage et le confort en toute saison.
- 3** Terrasse-gradin du niveau R+10 à R+15